

# **ISU Property Control Surplus Catalog**

**This surplus catalog is for reference only. To claim an item, you must come to the Warehouse Road complex. This catalog will be updated each Monday.**

## Table of Contents

Cabinets & Shelving Units.....	3
Desks & Tables.....	16
Chairs .....	30
Office Equipment & Miscellaneous Equipment .....	50

## Cabinets & Shelving Units

**117 – 20250317 Brown Filing Cabinet**



**120 – 20250317 Dark Brown Cabinet**



**143- 20251121 Black Filing Cabinet**



**155- 20250721 Tan Filing Cabinet (QTY 3)**



**156- 20250728 Small Tabletop Cabinet**



**168- 20250822 Tall Gray Filing Cabinet**



**173- 20250905 Black Filing Cabinet**



**175- 20250908 Black Filing Cabinet**



**178- 20250926 Short Black Filing Cabinet**



**179- 20260116 Gray Cabinet**



**182- 20251010 Gray Filing Cabinet (QTY 3)**



**183- 20251027 Black Filing Cabinet (QTY 2)**



**185- 20251107 Short Gray Filing Cabinet**



**186- 20251107 White Filing Cabinet**



**188- 20260112 Gray Shelving Unit**



**190- 20260105 Wooden Filing Cabinet**



**191- 20251114 Short Black Filing Cabinet (QTY 4)**



**192- 20251114 Tall Black Filing Cabinet**



**193- 20251208 Short Filing Cabinet w/ Six Drawers**



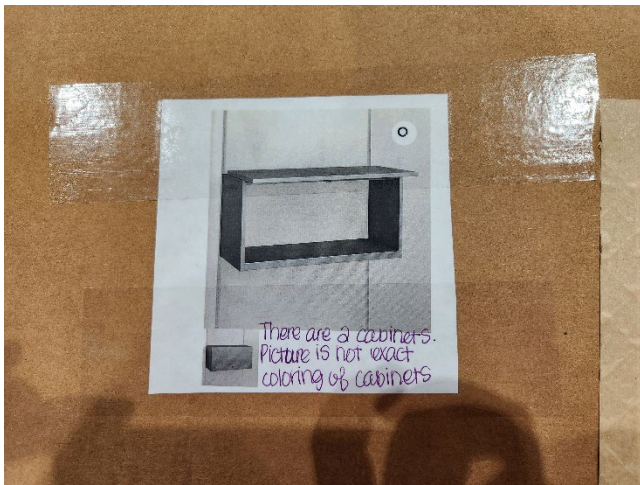
**194- 20260105 Gray Filing Cabinet**

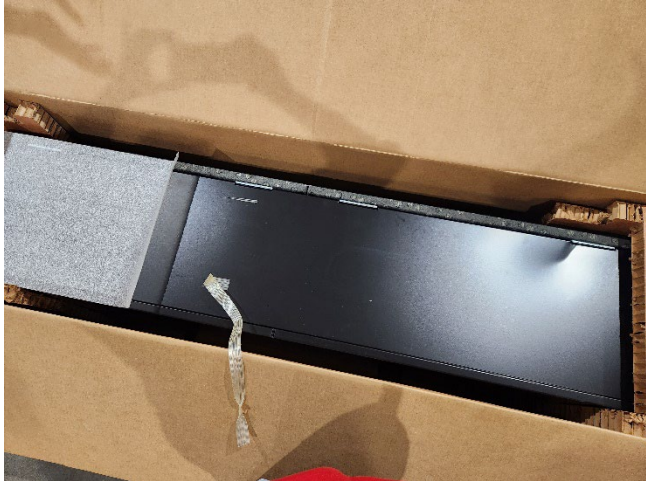


**195- 20251114 Short Black Filing Cabinet**



**196- 20251114 Large Overhead Cabinet W/ 2 Drawers (2 Pictures)**





**197- 20251121 White Cabinet**



**198- 20251215 Gray Shelves (QTY 5)**



**199- 20251215 Black Shelves**



## Desks & Tables

**200- 20260105 Large Blue Desk**



**201- 20260105 Blue Desk**



**202- 20260105 Round Blue Table**



**203- 20260105 Small Wooden Table**



**224 -20250324 Black Desk**



**232- 20250409 Square Coffee Table**



**253- 20250829 Wooden Coffee Table**



**274- 20250815 Wooden Desk**



**275- 20260112 Brown Table**



**276- 20260112 Black Table**



**277- 20260123 Round Brown Table**



**282- 20250822 Black Table w/ Wheels (Sides Fold Down)**



**283- 20250822 Small Black Table w/ Wheels**



**285- 20251208 Gray Desk w/ Wooden Top**



**286- 20251208 Wooden Top Table (QTY 2)**



**287- 20250908 Tan Table w/ Wheels**



**288- 20250919 Gray Table**



**289- 20260116 Small Wooden Top Table**



**290- 20250926 Wooden Top Table**



**291- 20251201 Tan Table**



**292- 20251017 Curved White Table w/ Wheels (QTY 13)**



**293- 20251201 Long White Table (QTY 2)**



**295- 20251107 Gray Desk w/ Wheels & Keyboard Tray**



**296- 20260112 Brown Table w/ Wheels**



**297- 20260112 Rolling Desk (QTY 2)**



**298- 20260206 Small Wooden Table**



**299- 20251121 White Table w/ Wheels**



## Chairs

**300- 20251208 Gray & Black Pattern Chair (QTY 2)**



**301- 20260105 Gray Chair w/ Wheels**



**303- 20260105 Black Chair**



**304- 20260105 Gray Chair**



**305- 20260130 Maroon Chair**



**306- 20260130 Blue Chair (QTY 2)**



**307- 20260130 Red Chair**



**308- 20260130 Gray Chair (QTY 2)**



**311 – 20250317 Brown & Black Chair**



**313- 20250829 Black Chair**



**314- 20250829 Cream Colored Chair**



**316 – 20250317 Red Office Chairs (QTY 2)**



**321 - 20250317 Green Office Chair**



**328- 20250630 Two-Seated Green Chair**



**332- 20250423 Wooden Chair**



**336- 20250512 Silver/Gray Classroom Chairs (QTY 2)**



**348- 20250527 Blue Office Chair**



**351- 20250606 Blue & Black Chair**



**358- 20250616 Wooden Chair (QTY 6)**



**365- 20250630 Wooden Chair w/ Blue Cushion (QTY 15)**



**370- 20251027 Gray Folding Chair**



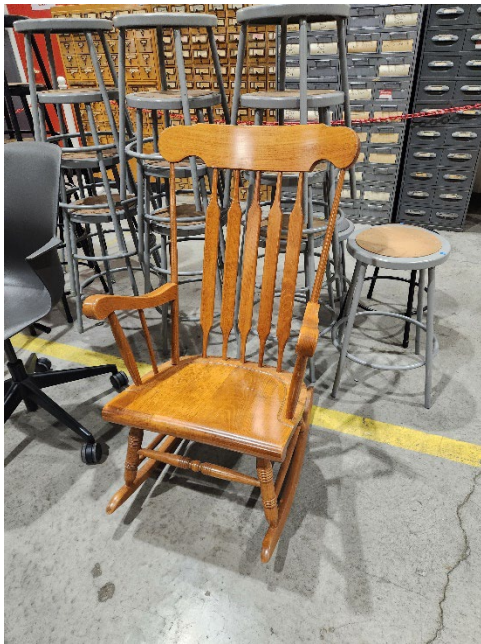
**371- 20251107 Blue Chair**



**379- 20250811 Black Chair (QTY 2)**



**380- 20251121 Wooden Rocking Chair**



**381- 20260206 Maroon Chair (QTY 16)**



**382- 20250815 Wooden Chair (QTY 2)**



**384- 20251107 Gray Chair**



**387- 20250926 Maroon & Black Chair (QTY 5)**



**388- 20250815 Red Chair (QTY 2)**



**389- 20260112 Gray Chair w/ Wheels**



**390- 20250815 Short Black Stool**



**391- 20250815 Short Gray Stool**



**392- 20250815 Red Stool (QTY 8)**



**393- Gray Stool (QTY 11)**



**394- 20250815 Black Stool (QTY 3)**



**395- 20251201 Brown Chair w/ Wheels**



**396- 20251201 Blue Chair**



**397- 20251010 Blue Chair (QTY 2)**



**398- 20250822 Wooden Chair w/ Black Seat Cushion**



**399- 20251201 Brown Chair**

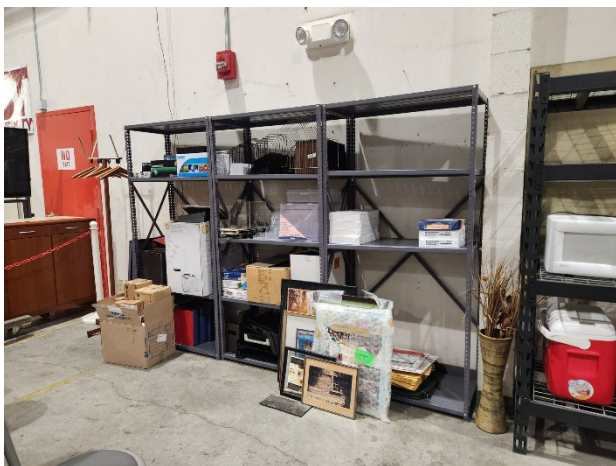


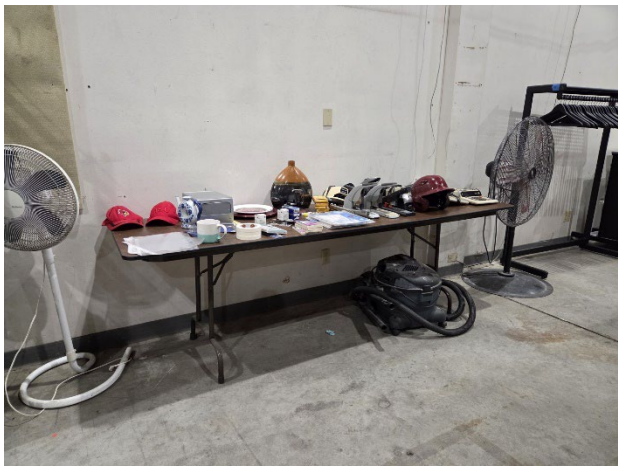
## Office Equipment & Miscellaneous Equipment

408 – 20250317 Dual Monitor Stand (QTY 6)



410 – 20250527 Office Supplies/Miscellaneous (3 Pictures)





**419- 20250616 White Board Stand (QTY 5)**



**424- 20250829 Tripod Stand (QTY 4)**



**427- 20251027 Large Floor Standing Fan**



**429- 20251107 Cell Phone/Tablet Holder Stand (QTY 2)**



**430- 20251114 Metal Easel (QTY 2)**



**431- 20251114 AV Cart w/ Wheels**



**433- 20251215 Work Station Cart w/ Wheels**



**434- 20251215 Work Station Cart w/ Wheels**



**435- 20260123 Coat Rack w/ Hangers**



**436- 20260123 AV Stand**

